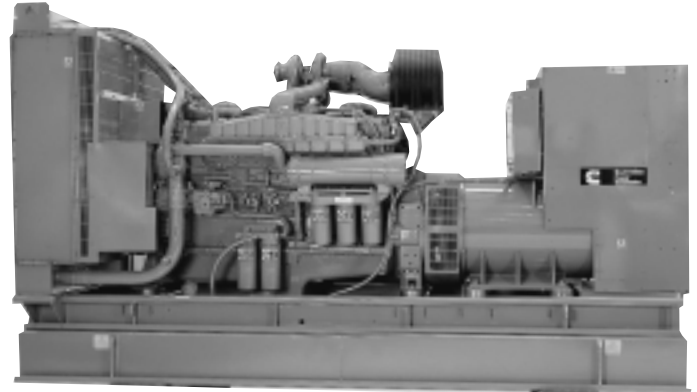


## Diesel Powered Generating Sets 545 kW - 603 kW 60 Hz VTA28 Series Engines



545 DFGB with optional sub-base fuel tank.

### Standard Genset Features

#### Single Source Responsibility

- Design, manufacture and test of all components and accessories are made by Cummins Power Generation and Cummins companies

#### International Integrity

- Assurance and strength of a worldwide, world class corporation

#### Global Backing

- 24 hour spares and service support – in 72 countries

#### Single Source Warranty

- Complete genset covered by Cummins Power Generation comprehensive warranty

#### Packaged Self-Contained Units

- Units with built in antivibration systems with provision for base fuel tank and other accessories

#### Cummins Engine

- Heavy duty 4 cycle water cooled engine
- Electronic governor control

#### Cooling System

- 50°C cooling package

#### Ready Filled

Every set comes filled with lube oil and anti-freeze

#### Alternator

- Brushless Group made machine
- Close voltage regulation
- Rotor and exciter impregnated with oil and acid resisting resin
- 12 lead reconnectable
- Exceptional short circuit capability
- Low waveform distortion with non linear loads

#### Ratings

All kW Power ratings based on a 40°C ambient temperature reference.

#### Chassis

Built-in anti-vibration system  
Bonded rubber units fitted as standard eliminates need for rubber mats or spring mountings

#### Integrated Control System

- Totally integrated design
- Full AC instrumentation
- Safety shutdowns
- Local or Remote starting
- Emergency stop button (optional)
- CE and non CE options

#### Optional PCC PowerCommand Control System

- Microprocessor control
- Integrates governor and voltage regulation systems
- Superior alternator and genset protection system
- Accurate battery monitoring system
- Totally reliable and proven system




**Quality Assurance**  
Registered Firm Certificate Number FM509 in accordance with:  
BS EN ISO 9001  
Quality Assurance Schedule 3420/1



Cummins Power Generation, Cummins Engines and Newage Alternators are all part of the same group

60 Hz Ratings				
Model Prime	Prime kW (kVA)	Model Standby	Standby kW (kVA)	Engine Model
545 DFGB	545 (681)	603 DFGB	603 (754)	VTA28G5

## A Single Source for *all* Power System Solutions

# Specifications

## Generator Set Performance

### Voltage Regulation

Maintains voltage output to within  $\pm 1.0\%$ .  
At any power factor between 0.8 lagging and unity.  
At any variations from No load to Full load.  
At any variations from Cold to Hot.  
At speed droop variations up to 4.5%.

### Frequency Regulation

Isochronous under varying loads from no load to 100% full load when electronic governor is fitted.

### Random Frequency Variation

Will not exceed  $\pm 0.25\%$  of its mean value for constant loads – no load to full load.

### Waveform

Total harmonic distortion open circuit voltage waveform in the order of 1.5%. Three-phase balanced load in the order of 5.0%.

### Telephone Influence Factor (TIF)

TIF better than 50.  
THF to BS4999 Part 40 better than 2%.

### Alternator Temperature Rise

Class H insulation. Temperature rise up to 125°C permitted.

### Radio Interference

In compliance with BS800 and VDE levels G and N.

## Engine

Cummins VTA28G5 direct injection engines. 12-cylinder VT range.

### Type

Water cooled, four cycle, turbo charged and aftercooled.

### Construction

Four valves per cylinder, forged steel crankshaft and connecting rods, cast iron block, replaceable wet liners.

### Starting

24 volt negative earth. Battery charging 35 amp alternator. Fitted battery tray, battery leads and connecting lugs. Cranking current 1280 amps at 0°C on the VTA engine.

### Fuel System

24 volt fail safe fuel actuator. Dual spin-on paper element fuel filters. Cummins PT fuel injection system with integral electronic governor. Dual flexible fuel lines and connectors.

### Filters

Dry element air filters with restriction indicator and spin-on full flow paper element and by pass lube oil filters fitted. Corrosion resistor filter.

### Cooling

50°C radiator as standard. Oil cooler.

## Alternator

### Type

Brushless, single bearing, revolving field, pole, drip proof, screen protected.  
Class H insulation.  
Enclosed to IP22 (NEMA 1) standard.  
IC 01 cooling system.  
Fully interconnected damper winding.  
AC exciter and rotating rectifier unit.  
Epoxy coated stator winding.  
Rotor and exciter impregnated with tropical grade insulating oil and acid resisting polyester resin. Dynamically balanced rotor to BS5625 grade 2.5.  
Sealed for life bearings.  
Layer wound mechanically wedged rotor.

### Exciter

Triple dipped in moisture, oil and acid resisting polyester varnish and coated with anti-tracking varnish.  
Sealed solid state automatic voltage regulator – self-exciting, self-regulating.  
Output windings with 2/3 pitch for improved harmonics and paralleling ability.  
Close coupled engine/alternator for perfect alignment.

## Compliance Standards

To BS4999/5000 pt 99,  
VDE 0530, UTE5100,  
NEMA MG1-22, CEMA,  
IEC 34, CSA A22.2,  
AS1359, BS 5514,  
ISO 3046 and ISO 8528

## Chassis

Fabricated and welded steel chassis.  
Built-in anti-vibration mountings.  
Optional sub-base fuel tank with eight hour capacity, dual flexible fuel lines, dial type fuel gauge and drain bung.

### Finish

Etch undercoated and finished in high gloss durable green.

### General

Complete set of operating and instruction manuals.

## Generator Set Options

### Engine

- Heavy duty air cleaner
- Coolant heater and thermostat
- Fuel water separator
- Lead acid batteries, cable and fitted tray
- NiCad batteries
- Sump drain pump
- Oil and water drain taps
- CE Compliance (guarding)
- Exhaust temperature monitoring (PCC only)
- Tool kit
- Compliance to TA Luft

### Cooling

- Remote radiator cooling (built to order)
- Oil temperature indication

### Alternator

- Anti-Condensation heater
- Thermistors
- PMG Exciter and MX321 AVR
- 105°C rise alternator

### Exhaust System

- Industrial type silencer
- Residential type silencer
- Length of flexible exhaust and bellows

### Fuel System

- Sub-base tanks
- Hand fuel transfer pump
- Automatic fuel transfer pump
- Free-standing 450, 900 and 1350 litre fuel tanks with stand
- Fuel tank level switch
- High fuel level warning
- Low fuel level warning
- Low fuel level shutdown

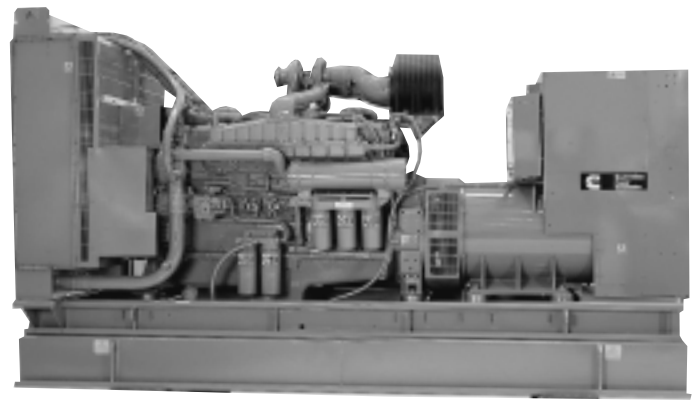
### Generator Set

- Weather protective enclosures
- Silenced enclosures

### Control Panel

- Refer to Control Panel literature for details of options
- 3 or 4 pole circuit breaker
- Battery charger 5 amp or 10 amp
- CE Compliance
- Cable entrance box
- Switch disconnecter 3P or 4P

# Technical Data



## Generating Sets – 60 Hz

Set output	220-480 V 60 Hz
Prime at 40°C ambient	545 kW 681 kVA
Model (Prime)	545 DFGB
Standby at 40°C ambient	603 kW 754 kVA
Model (Standby)	603 DFGB
Engine Make	Cummins
Model	VTA28G5
Cylinders	Twelve
Engine build	Vee
Governor / Class	Electronic / A1
Aspiration and cooling	Turbo Aftercooled
Bore and stroke	140 mm x 152 mm
Compression ratio	13.0:1
Cubic capacity	28 Litres
Starting / Min °C	Unaided / 4°C
Battery capacity	254 Ah
Nett Engine output – Prime	576 kWm
Nett at flywheel – Standby	639 kWm
Speed	1800 rpm
Alternator voltage regulation	±1.0%
Alternator insulation class	H
Single load step to NFPALIO para.5.13.2.6	100%
Fuel consumption (Prime) 100% load	154 l/hr
Fuel consumption (Standby) 100% load	173 l/hr
Lubrication oil capacity	83 Litres
Base fuel tank capacity – open set	1325 Litres
Coolant capacity – radiator and engine	207 Litres
Exhaust temp – full load prime	474°C
Exhaust gas flow – full load prime	7877 m <sup>3</sup> /hr
Exhaust gas back pressure max	76 mm Hg
Air intake – engine	3510 m <sup>3</sup> /hr
Air flow – radiator (50°C)*	19.4 m <sup>3</sup> /s
Pusher fan head (duct allowance) 50°C*	13 mm Wg
Total heat radiated to ambient	133 kW
Engine derating – altitude	4% per 300 m above 1220 m
Engine derating – temperature	2% per 11°C above 40°C

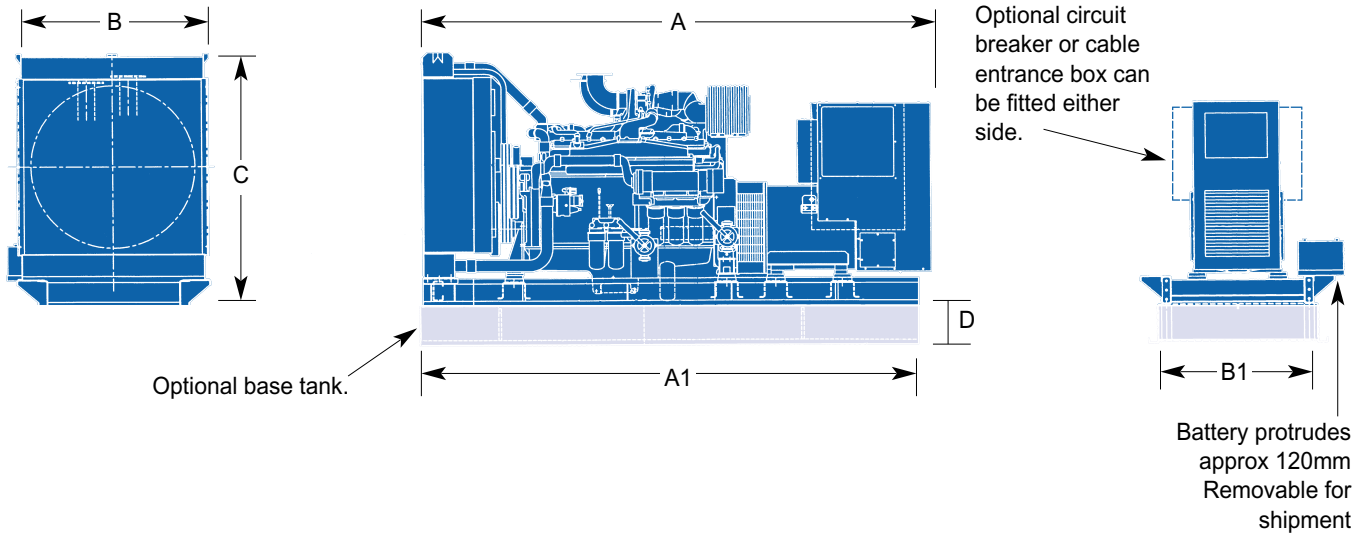
In accordance with ISO 8528, BS5514.

Prime: Continuous running at variable load for unlimited periods with 10% overload available for 1 hour in any 12 hour period.

Standby: Continuous running at variable load for duration of an emergency.

\*Subject to factory verification.

# Dimensions and Weights – 60 Hz



Model	Engine	Dimensions and Weights (mm/kg)						Set Weight kg Dry	Set Weight kg Wet	Tank Weight kg (dry)	Tank Weight kg (wet)
		A	A1	B1	B	C	D				
DFGB	VTA28G5	4047	4092	1350	1423	1987	300	5730	6040	610	1670

Set weights are **without** sub-base tank.

Dimensions and weights are for **guidance** only. Do not use for installation design. Ask for certified drawings on your specific application. Specifications may change without notice.



See your distributor for more information.

Cummins Power Generation Limited  
 Manston Park, Columbus Avenue  
 Manston, Ramsgate  
 Kent CT12 5BF, UK  
 Telephone: +44 (0)1843 255000  
 Fax: +44 (0)1843 255902  
 Email: [cpg.uk@cummins.com](mailto:cpg.uk@cummins.com)  
[www.cumminspower.com](http://www.cumminspower.com)  
[www.cummins.com](http://www.cummins.com)

Cummins is a registered trademark of Cummins Inc.